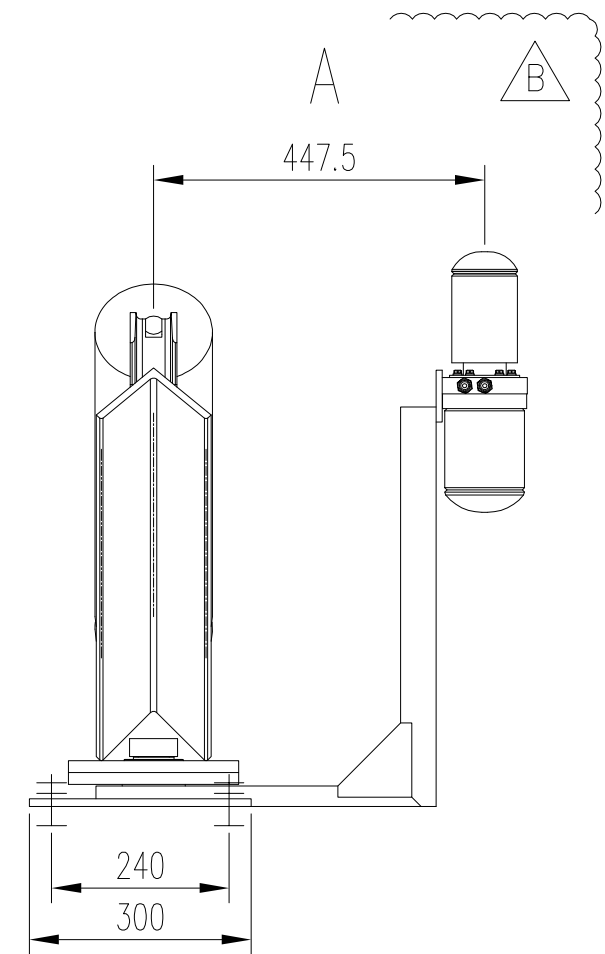
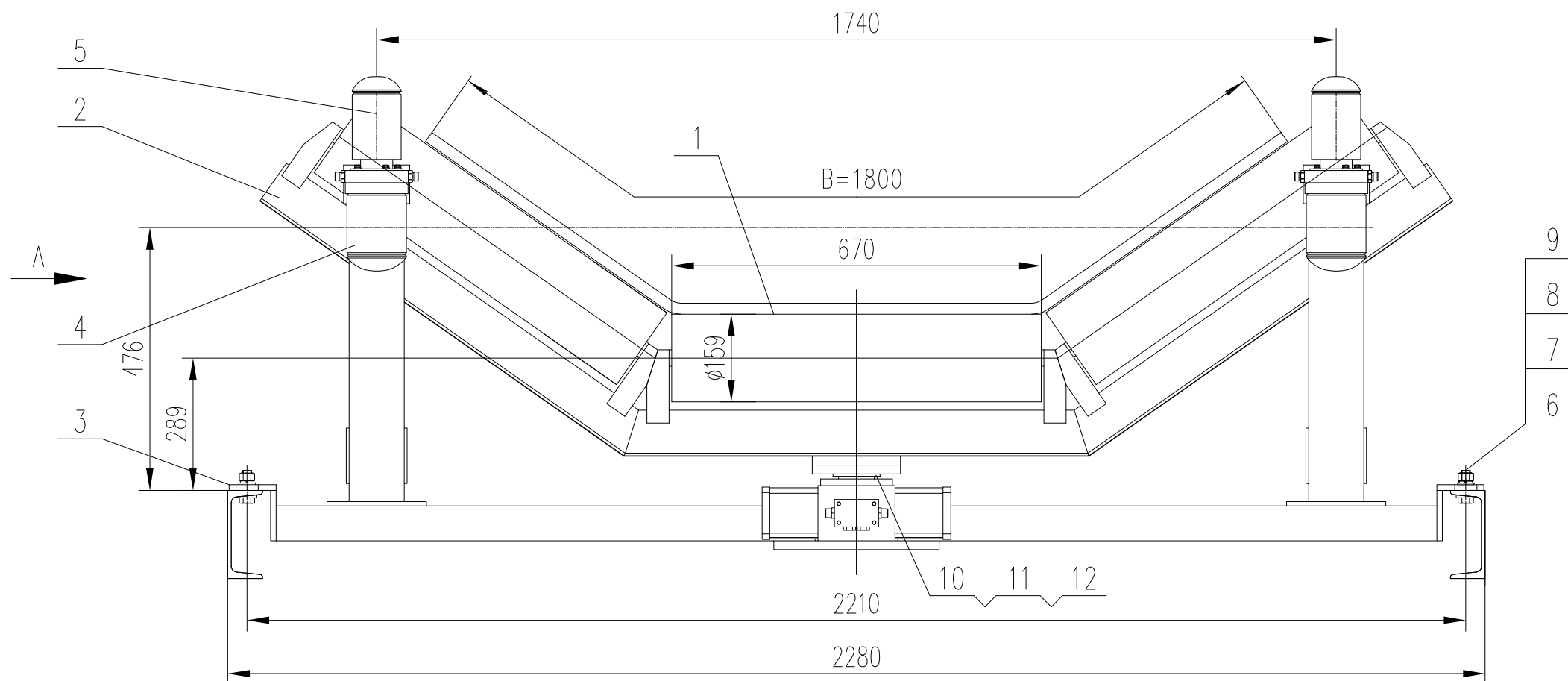
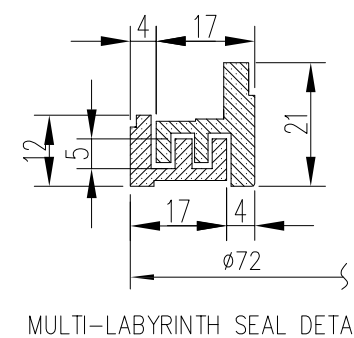
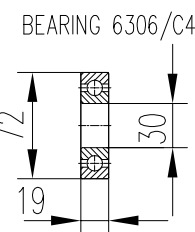
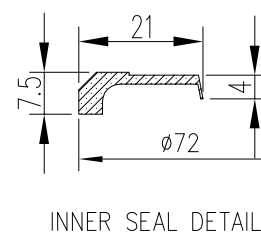
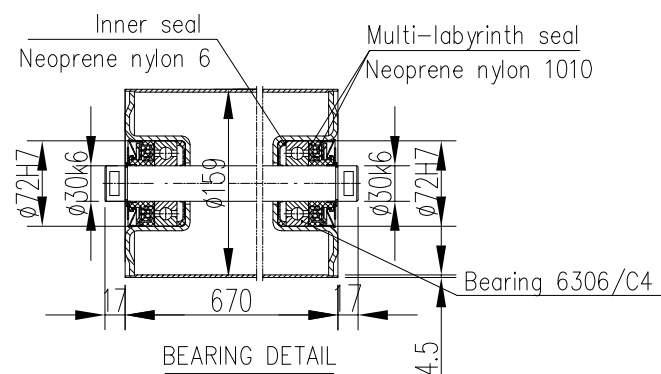


CARRYING HYDRAULIC IDLER W1800x35° QUANTITY=28 Sets



Notes:

1. Idler Material : Gr.D
2. Bearing No.: 6306/C4
3. Idler Diameter : $\phi 159$
4. Roller Thickness : 4.5mm
5. Idler transoms will be of steel welded construction and galvanized.
6. Idler roller shall be painted with thickness greater than 30 microns.
7. Under skirt area, the nuts will be welded on surface of the middle girder at site, the bolts will be tightened from the top.



12	YJ01C1111-4	Washer	1	Gr.D	0.074	0.07		5	YJ07C1144LGZ.5	Side roller	2	Component	2.55	5	
11	DIN471	closing ring 50	1		0.01	0.01		4	YJ08C1144LGZ.6	Side roller bracket	2	Gr.d	54.55	109	
10	1C4-5	Base	1	J05002	5.3	5.30		3	YJ07C2844.3	lower cross beam	1	Gr.D	47.52	47.52	
9	DIN435	Washer 16	4	Gr.D	0.03	0.12		2	YJ07C2844.2	upper beam	1	Gr.D	38.32	38.32	
8	DIN125-A	Washer 16	4		0.03	0.12		1	YJ07C2844.1	roller $\phi 159$ 4G306	2	Component	48.42	96.84	
7	DIN555	Nut M16	4		0.03	0.12		No.	Code	Designation	Qty	Material	Unit	Total	Remarks
6	DIN558	Bolt M16x45	4		0.1	0.40							Weigh(kg)		

FOR APPROVAL

THIS DRAWING IS THE PROPERTY OF DMPP CONSORTIUM. IT IS NOT TO BE COPIED OR USED IN ANY WAY DETRIMENTAL TO THE COMPANY.

Rev.	Date (DD.MM.YYYY)	Prepared	Checked	Approved	Details of Revision
1	04.06.2019	SHAO C.D.	L.T.HOA	D.T.T.N	FOR APPROVAL
2	28.11.2018	SHAO C.D.	L.T.HOA	D.T.T.N	FOR APPROVAL

Client: **VIETNAM ELECTRICITY**

Owner's Engineer: **POWER ENGINEERING CONSULTING JS COMPANY 3** **POWER ENGINEERING CONSULTING JS COMPANY 4**

Contractor: **DOOSAN** **Mitsubishi Corporation** **EVNPECC2** **SAPACIFIC**

Sub-Suppliers:

Project: **VINH TAN 4 EXTENSION THERMAL POWER PLANT PROJECT (600MW x 1 unit)**

Project Code: VT4E

Unit Code: XW01

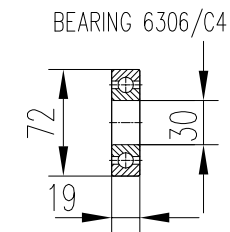
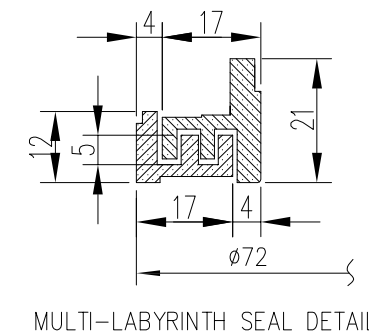
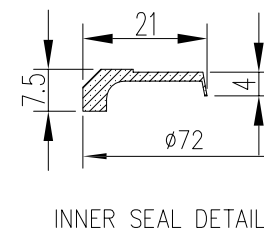
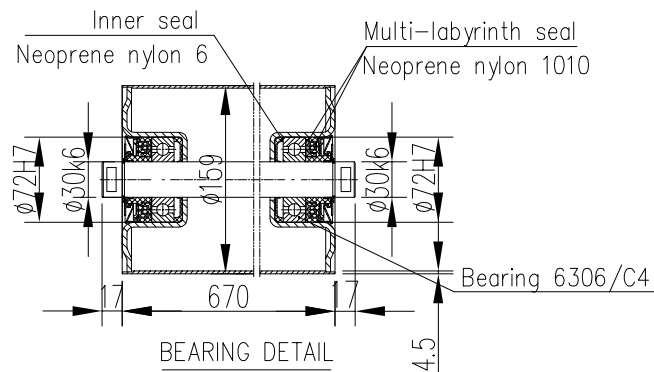
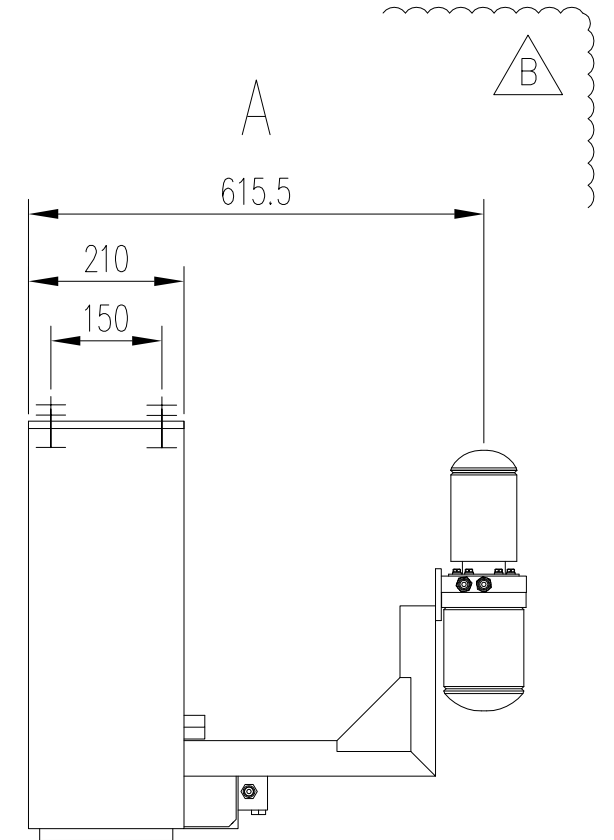
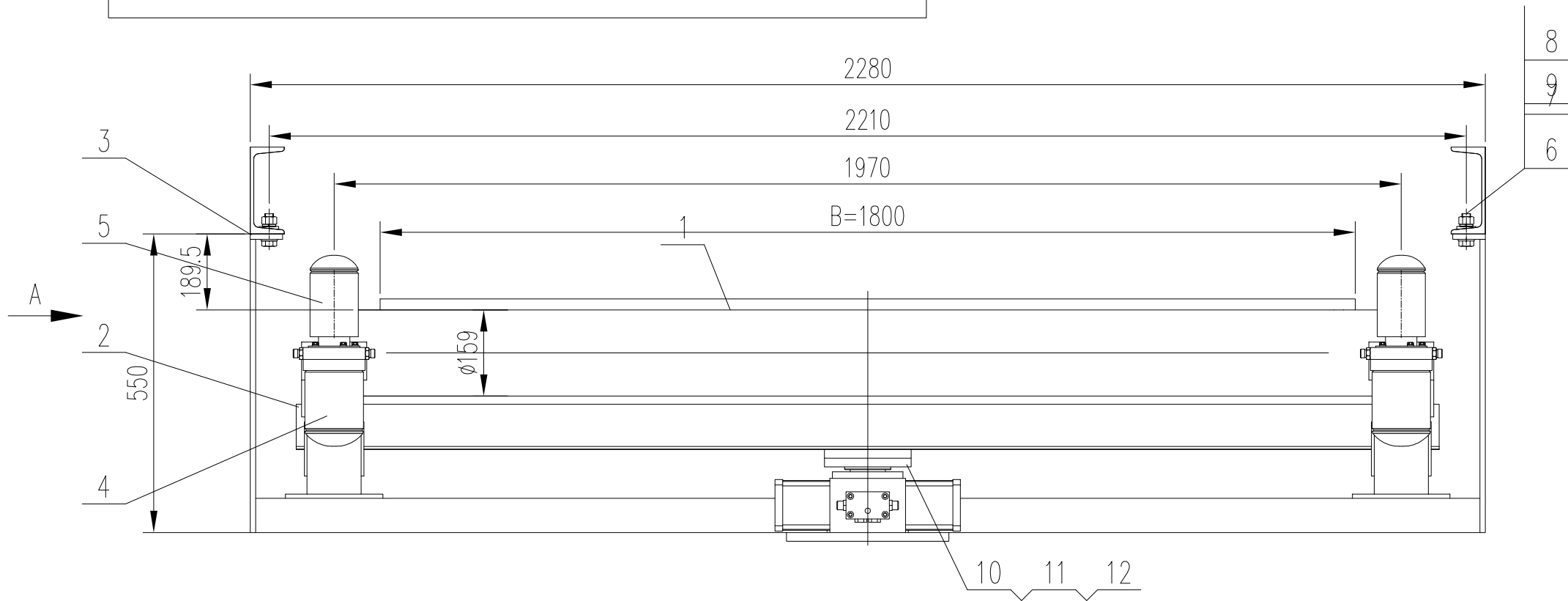
Rep. No: 625001

Rev: B

Page No: 32 of 49

VT4E-XW01-POECC-625001

RETURN HYDRAULIC IDLER W1800 QUANTITY=22 Sets



Notes:

- 1.Idler Material :Gr.D
- 2.Bearing No.:6306/C4
- 3.Idler Diameter : Ø159
- 4.Roller Thickness :4.5mm
- 5.Idler transoms will be of steel welded construction and galvanized.
- 6.Idler roller shall be painted with thickness greater than 30 microns.
- 7.Under skirt area, the nuts will be welded on surface of the middle girder at site, the bolts will be tightened from the top.



12	YJ01C1111-4	Washer	1	Gr.D	0.074	0.07		5	YJ07C1144LGZ.5	Side roller	2	Component	2.55	5	
11	DIN471	closing ring 50	1		0.01	0.01		4	YJ08C1144LGZ.6	Side roller bracket	2	Gr.d	54.55	109	
10	1C4-5	Base	1	J05002	5.3	5.30		3	YJ07C2844.3	lower cross beam	1	Gr.D	47.52	47.52	
9	DIN435	Washer 16	4	Gr.D	0.03	0.12		2	YJ07C2844.2	upper beam	1	Gr.D	38.32	38.32	
8	DIN125-A	Washer 16	4		0.03	0.12		1	YJ07C2844.1	roller Ø159 4G306	2	Component	48.42	96.84	
7	DIN555	Nut M16	4		0.03	0.12		No.							
6	DIN558	Bolt M16x45	4		0.1	0.40									
								No.	Code	Designation	Qty	Material	Unit	Total	Remarks
													Weigh(kg)		

FOR APPROVAL

THIS DRAWING IS THE PROPERTY OF DMPP CONSORTIUM. IT IS NOT TO BE COPIED OR USED IN ANY WAY DETRIMENTAL TO THE COMPANY.									
Rev.	Date (DD.MM.YYYY)	Prepared	Checked	Approved	Details of Revision				
1	04.06.2019	SHAO CD	L.T.HOA	D.T.TN	FOR APPROVAL				
2	28.11.2018	SHAO CD	L.T.HOA	D.T.TN	FOR APPROVAL				
Client									
VIETNAM ELECTRICITY									
Owner's Engineer									
POWER ENGINEERING CONSULTING JS COMPANY 3									
POWER ENGINEERING CONSULTING JS COMPANY 4									
Contractor									
DOOSAN									
Mitsubishi Corporation									
EVNPECC2									
SAPACIFIC									
Sub-Suppliers									
Project									
VINH TAN 4 EXTENSION									
THERMAL POWER PLANT PROJECT									
(600MW x 1 unit)									
Project Code									
VT4E									
Unit Code									
W01									
KKS Code									
ECC									
Rep. No									
625001									
Rev.									
B									
Page-No.									
33 of 49									
Drawing No.									
VT4E-XW01-POECC-625001									